



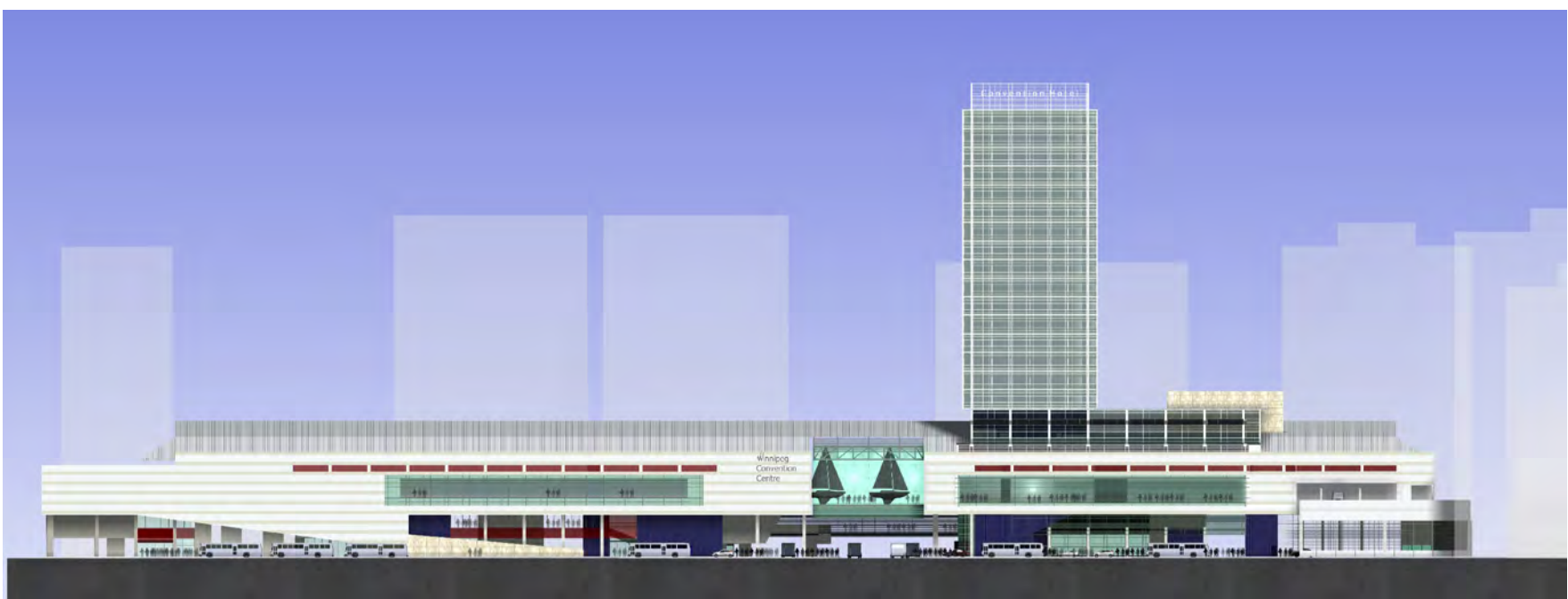
View from across Edmonton Street.



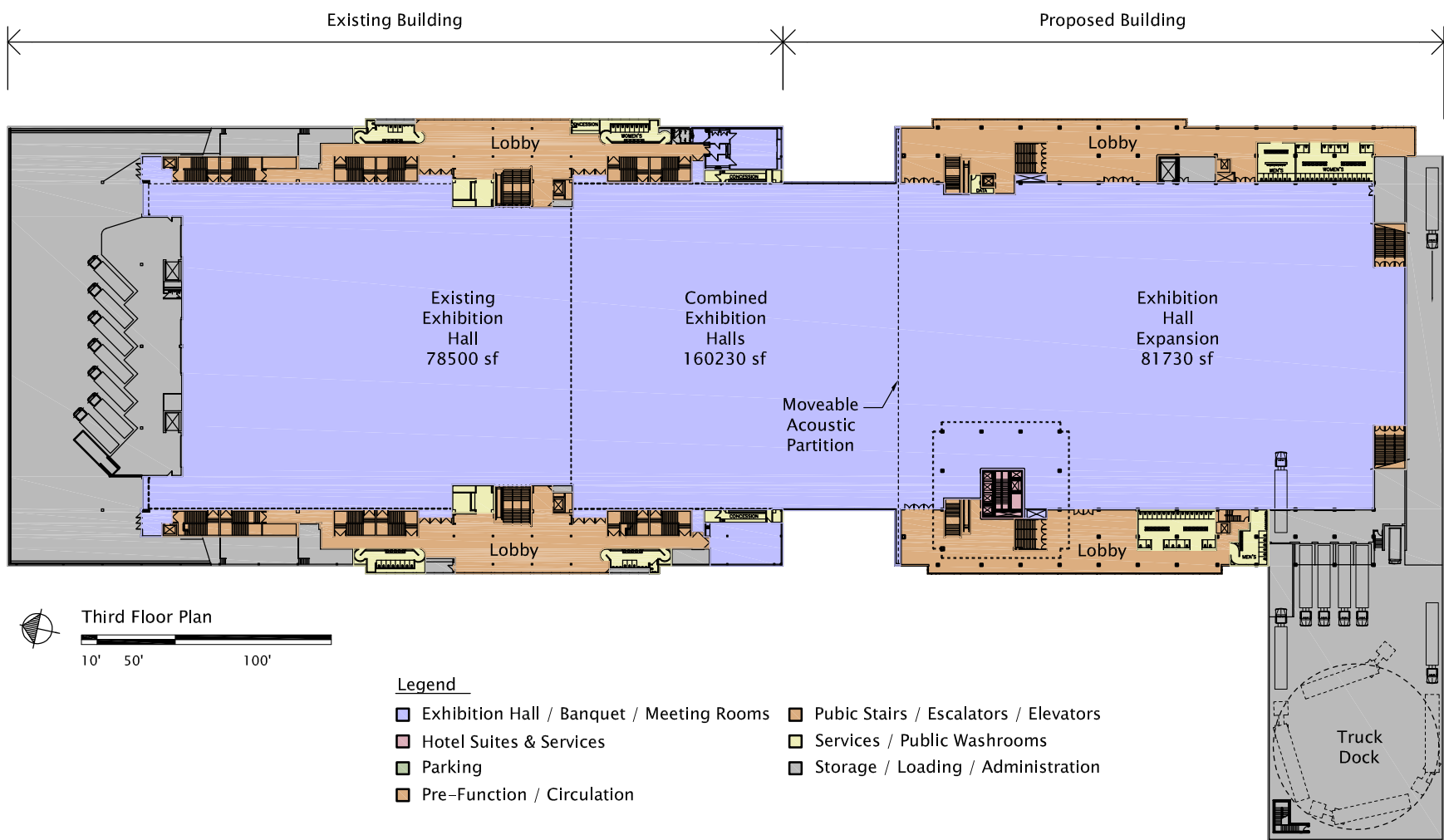
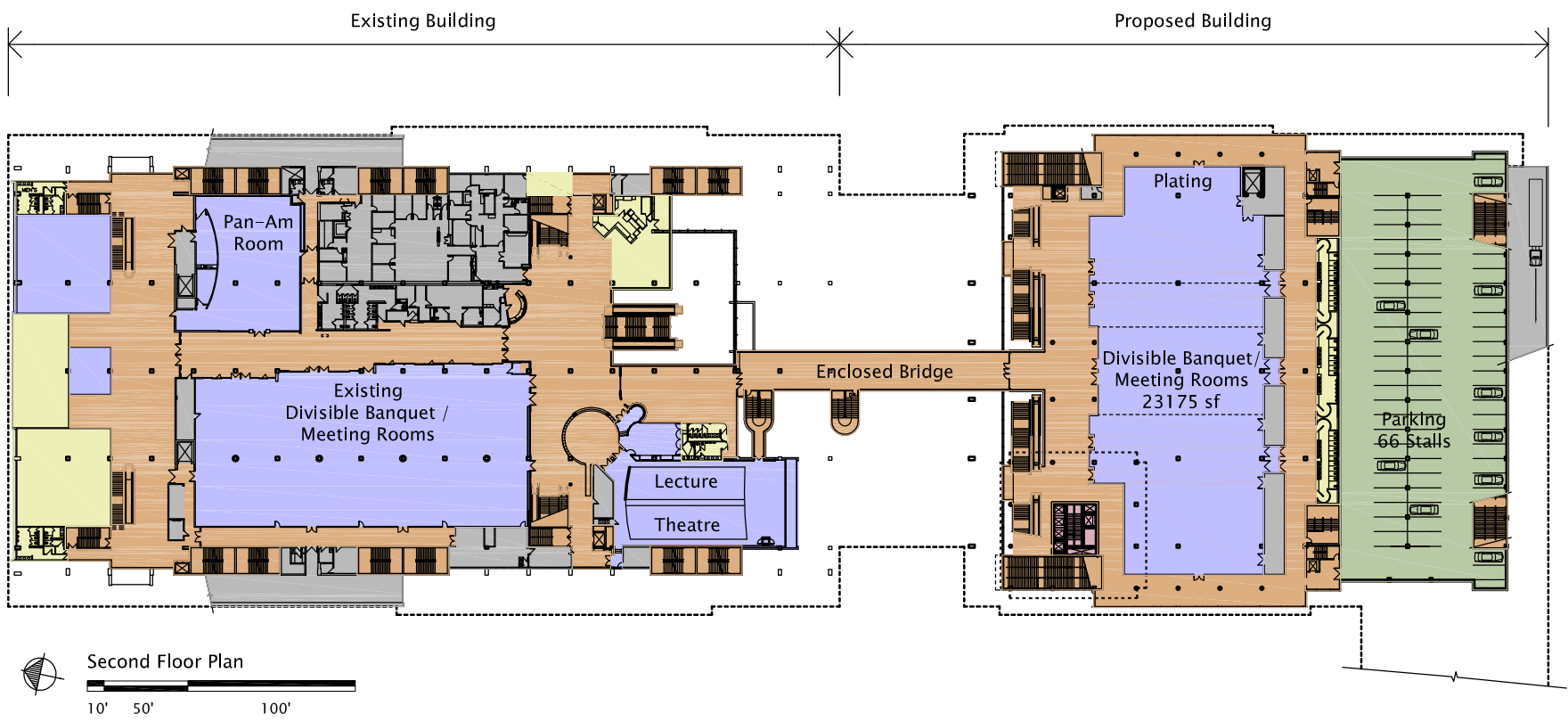
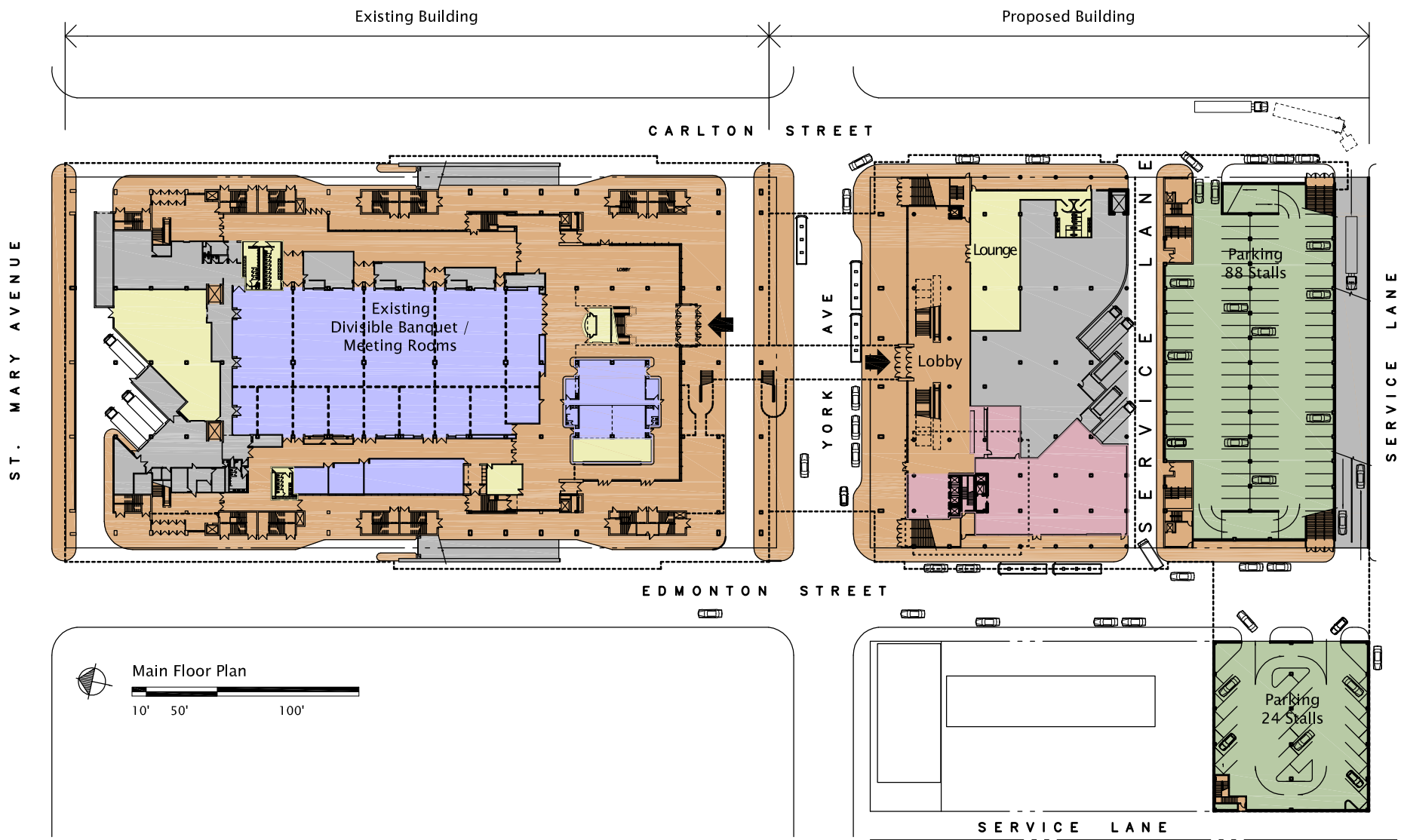
Site / context aerial image.



East down York Avenue.



Edmonton Street – West Elevation.



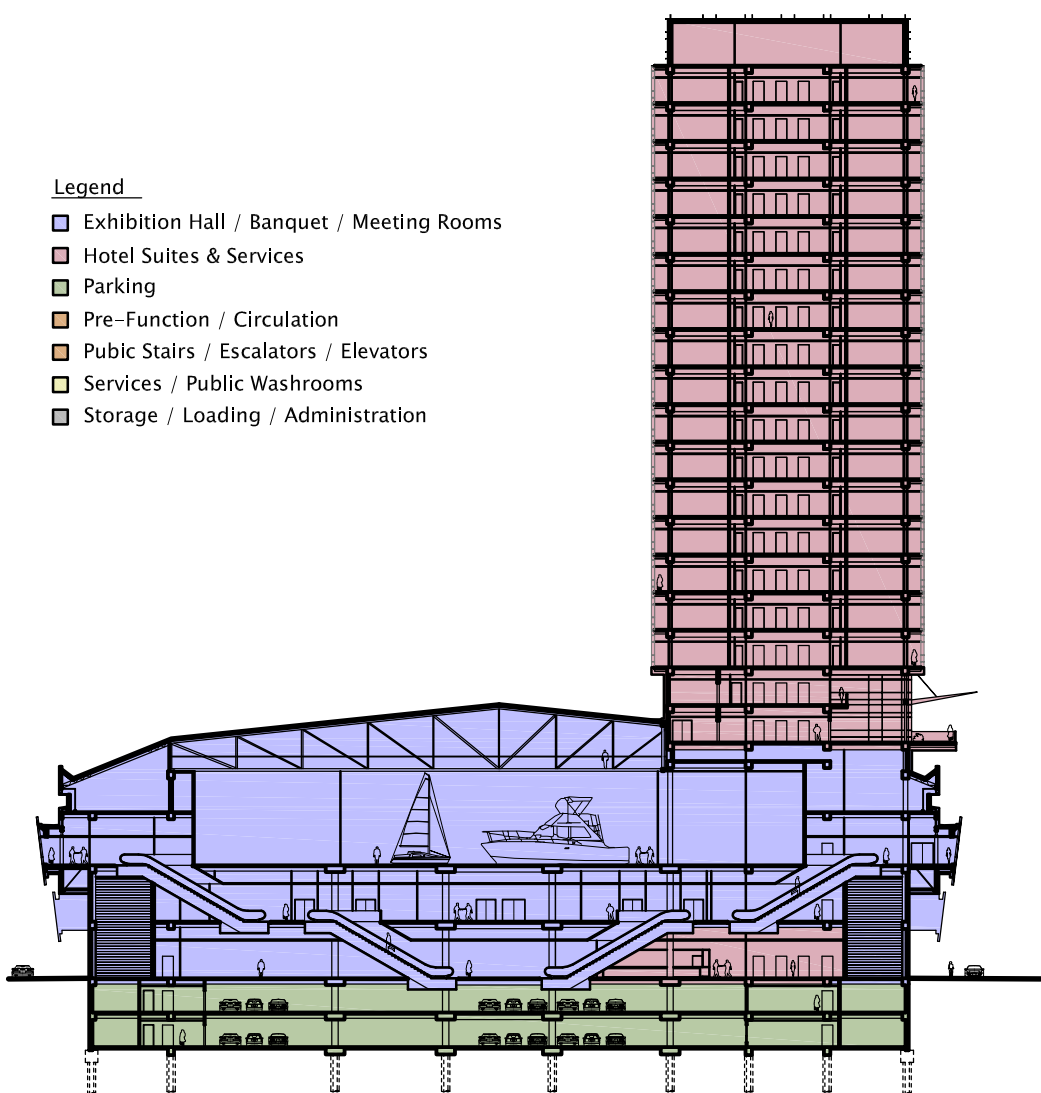
- Legend**
- Exhibition Hall / Banquet / Meeting Rooms
  - Hotel Suites & Services
  - Parking
  - Pre-Function / Circulation
  - Pubic Stairs / Escalators / Elevators
  - Services / Public Washrooms
  - Storage / Loading / Administration



East down York Avenue.

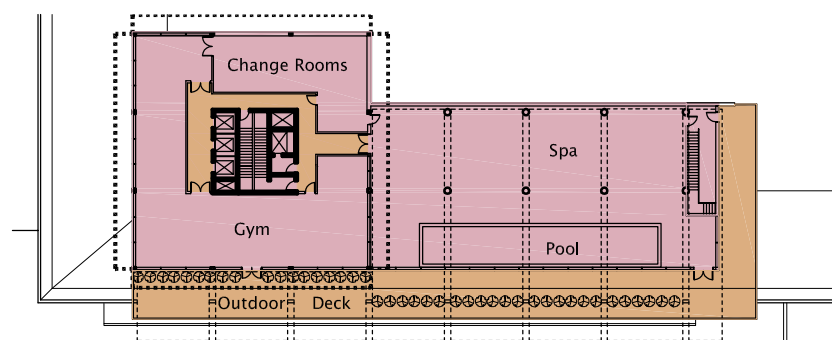
**Legend**

- Exhibition Hall / Banquet / Meeting Rooms
- Hotel Suites & Services
- Parking
- Pre-Function / Circulation
- Pubic Stairs / Escalators / Elevators
- Services / Public Washrooms
- Storage / Loading / Administration

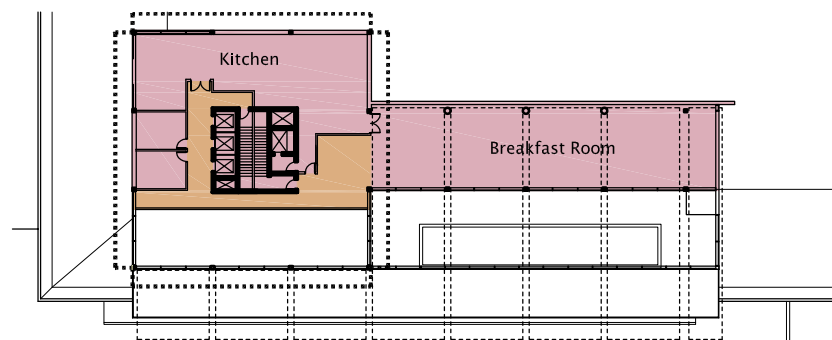


West-East Building Section

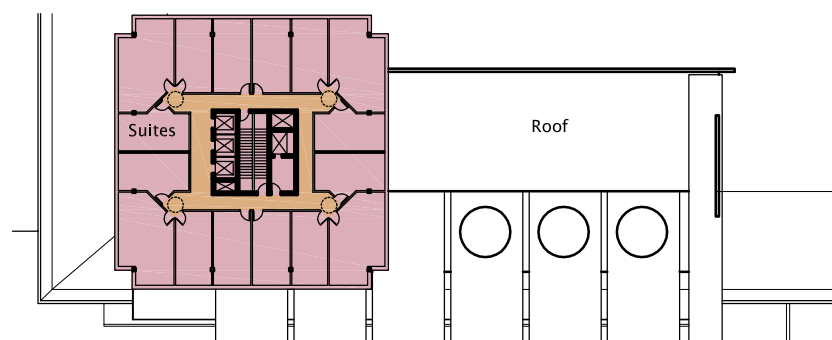
10' 50'



Fifth Floor Hotel Plan

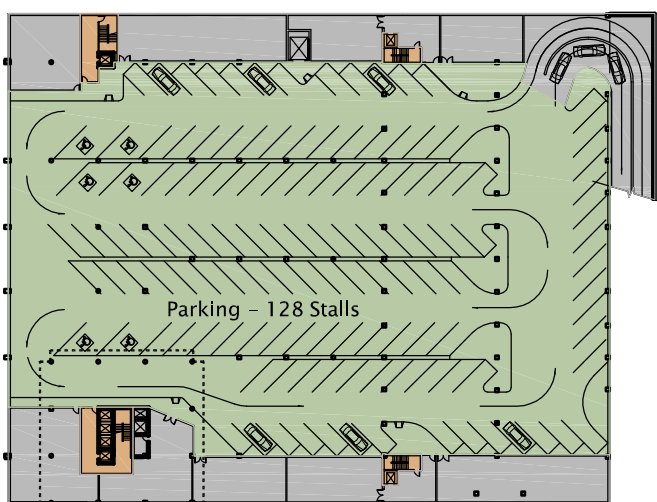


Sixth Floor Hotel Plan



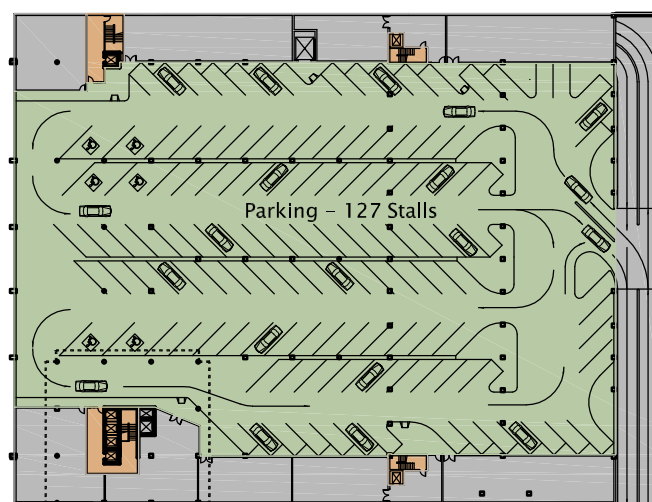
Seventh through Twenty-Third Floor Hotel Plan

10' 50'



Upper Parkade Plan

10' 50' 100'



Lower Parkade Plan

10' 50' 100'